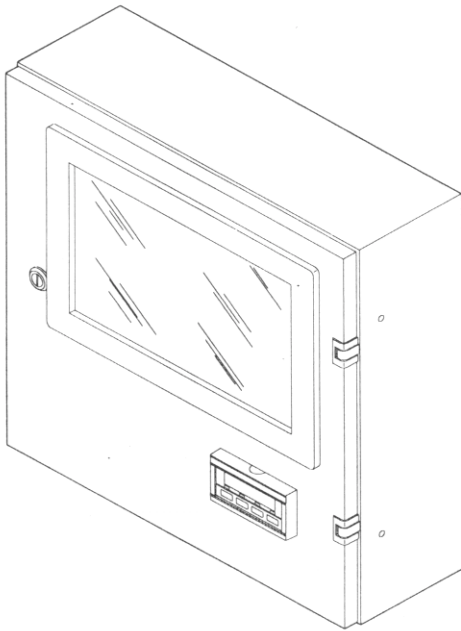




Electro AV Recorder



- Remote chart recording capability over serial data link
- Unlimited range with reversing pen
- Uses standard Stevens A -10 chart
- Compatible with Stevens AxSys MPU andGS-93
- Optional integral digital readout
- Simple operation; rugged construction

The Stevens Electro AV Recorder is a 10" wide strip chart recorder designed primarily for water level gaging applications. It utilizes an AC synchronous chart drive motor together with solid state electronics to control pen position by use of a stepper motor. It accepts a serial RS-232 encoded signal, which is interpreted to produce proper pen movement. The signal represents an absolute level indication. Battery backup memory within the circuitry maintains the reference value during power down conditions, allowing for proper registration when power is restored. An integral 5-digit display is available as an option. Power is derived from standard 110 VAC line.

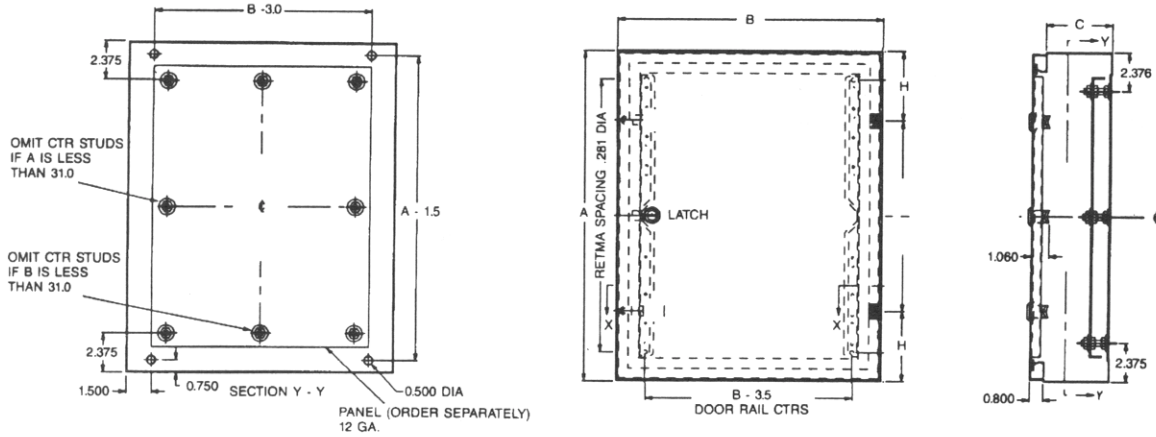
System Operation

A complete system consists of an AxSys MPU or GS-93 as a transmitting device, an appropriate sensor, a communications link, and the Electro AV as the receiving unit. The transmitting AxSys or GS-93 senses and records water level data, and provides a continuous serial output signal to the communications link. This link can be dedicated wires, VHF radio or spread spectrum technology.

Dedicated wire links typically include Stevens Direct Link Modems that allow for transmissions over several miles of a simple, two-wire cable. VHF radio links utilize compact radio modems, capable of line-of-site wireless links in excess of 20 miles. These require FCC licensing. Spread spectrum technology also provides for wireless links over shorter distances without the need for FCC licensing.

The optional digital display provides a continuous, 5-digit readout that exactly duplicates the transmitting device reading. With the digital transmission system, there is no loss of accuracy or resolution from transmitter to receiver.

Electro-AV Outline Drawing (Panel cutout 20 1/4" x 20 1/4")



A= 20" B= 20" C= 6"

Specifications	
Input Power:	110 VAC, 1/4 Amp
Available Output Power:	12 VDC, 1 amp
Input Signal:	RS-232 or SDI-12 (optional) 300 BPS, 7 data bits, 1 stop bit even parity
Output:	Strip Chart, 10" wide 5 Digit Display (optional)
Chart:	A-10
Chart Speeds:	2.4 in/day (optional 1.2, 4.8)
Gage Scale:	1:6 (width of chart = 5ft of level change, minor dicision = .05ft)
Resolution:	.01ft of water level change
Accuracy:	.025 ft of water level change
Pen:	Replaceable felt tip cartridge
Operating Conditions:	-20 to 50 degrees C 10 to 95% humidity, non-condensing

Stevens Water Monitoring Systems, Inc.

5465 SW Western Avenue, Suite F, Beaverton, Oregon. 97005

(Toll-free) 1-800-452-5272 (tel) 503-469-8000 (fax) 503-469-8100

Website address: www.stevenswater.com e-mail address: info@stevenswater.com