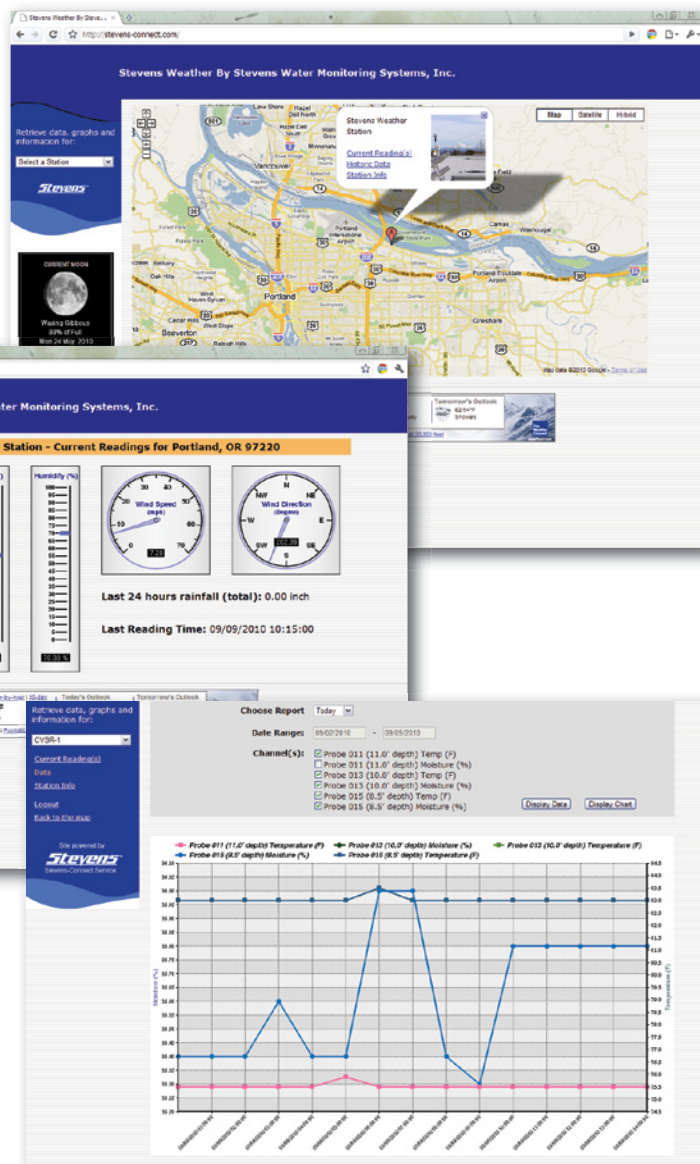


# Stevens-Connect Datasheet

## Web-Based Data Management Software

## Features



- Direct data acquisition from sensors at remote data collection stations via cellular data modem or other telemetry devices.
- Access to data 24/7 from any computer or smart phone with an Internet connection
- Long-term data archiving and access
- Graphs, maps, station information and charts of collected data come standard
- Enhanced data analysis with custom reports, calculations, and web service interface
- Data notifications via email, SMS, and/or voice
- Multiple data format outputs available

**SEE BACK FOR ADDITIONAL FEATURES AND BENEFITS**

## Description

Stevens-Connect is a web-based data acquisition and management software system that enables the collection, analysis, reporting, and storage of data from remote monitoring locations. Stevens-Connect wireless communication from the monitoring locations to the Internet is made via cell modem, radio, or satellite modem. As a web-based service, Stevens-Connect streamlines the data management process and can be accessed from any computer or smart phone with connectivity to the Internet.

Stevens-Connect manages data from multiple locations and reduces the need for a localized data management software and data collection hardware.

Visit [www.stevens-connect.com](http://www.stevens-connect.com) for a live demo of the service.

[www.stevenswater.com](http://www.stevenswater.com)

1.800.452.5272

## Applications

- Remote site monitoring
- Regulatory data management and data retention compliance
- Gage station reporting
- Water and weather monitoring networks
- Agricultural monitoring, farms, and vineyards

**Stevens**<sup>®</sup>  
Water Monitoring Systems, Inc.

## Corporate Headquarters

12067 NE Glenn Widing Drive  
Suite 106  
Portland, Oregon 97220

800.452.5272 Tel  
503.445.8000  
503.445.8001 Fax  
info@stevenswater.com  
[www.stevenswater.com](http://www.stevenswater.com)

Since 1911, Stevens Water Monitoring Systems, Inc. has provided complete water monitoring solutions including:

- Water Level Sensors
- Water Quality Sensors
- Soil Moisture Sensors
- Chart Recorders
- Staff Gages
- Telemetry Systems
- Data Collection Platforms

# Stevens-Connect

## Web-Based Data Management Software

### Additional Features of Stevens-Connect

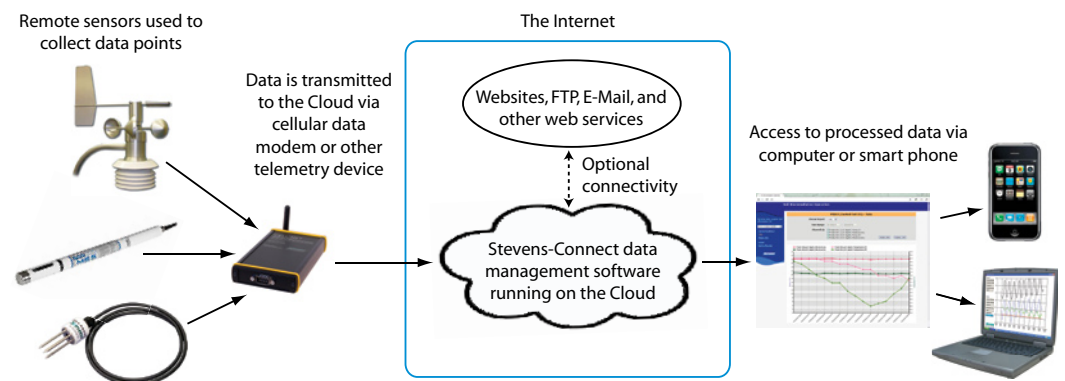
- Automatic, long-term archiving and retrieval of data online.
- Graphs, maps, station information and charts of collected data come standard with Stevens-Connect service.
- Customized web site design, reports, and data processing per user's specifications.
- Stevens-Connect can send data to any number of servers using FTP or HTTP without the need of a dedicated web site.
- Data output available in an XML, Excel, .CSV, and many other popular data format.
- Automatic alerts and custom alarm conditions can be sent via email, SMS, or voice message.
- Optional password protection to keep data private.
- Remote images or video can be integrated into the Stevens-Connect service.
- Custom calculations such as: min/max average, evapotranspiration, flow, and conversion of raw data.

### Benefits of Stevens-Connect

- No special hardware or software is required, other than a modem at each monitoring location.
- Easy to access data that is easy to understand – no initial processing of raw data required.
- Stevens-Connect.com can automatically send email alerts to anyone at anytime, anywhere in the world.
- Scalable for any data acquisition requirement or number of sites.
- No need to maintain a separate Internet data analysis and presentation system.
- A remote data logger may not be necessary with sensors connected to an IP-addressable modem.
- Data can easily be linked to forecasting, modeling programs, or customized reports.
- Data is backed up and maintained at a secure web hosting facility.
- Reduced hardware and maintenance costs of data acquisition infrastructure.

### Parameters Available for Online Display

**Most sensors connected to a data logger or modem can be integrated and displayed on the Stevens-Connect Service.** Stevens Water will help you determine the right products for your system, based on your data collection needs.



For more information or pricing on the Stevens-Connect service, please contact Stevens Water at (800) 452-5272 or email [info@stevenswater.com](mailto:info@stevenswater.com).

A live demo of Stevens-Connect can be viewed at [www.stevens-connect.com](http://www.stevens-connect.com).